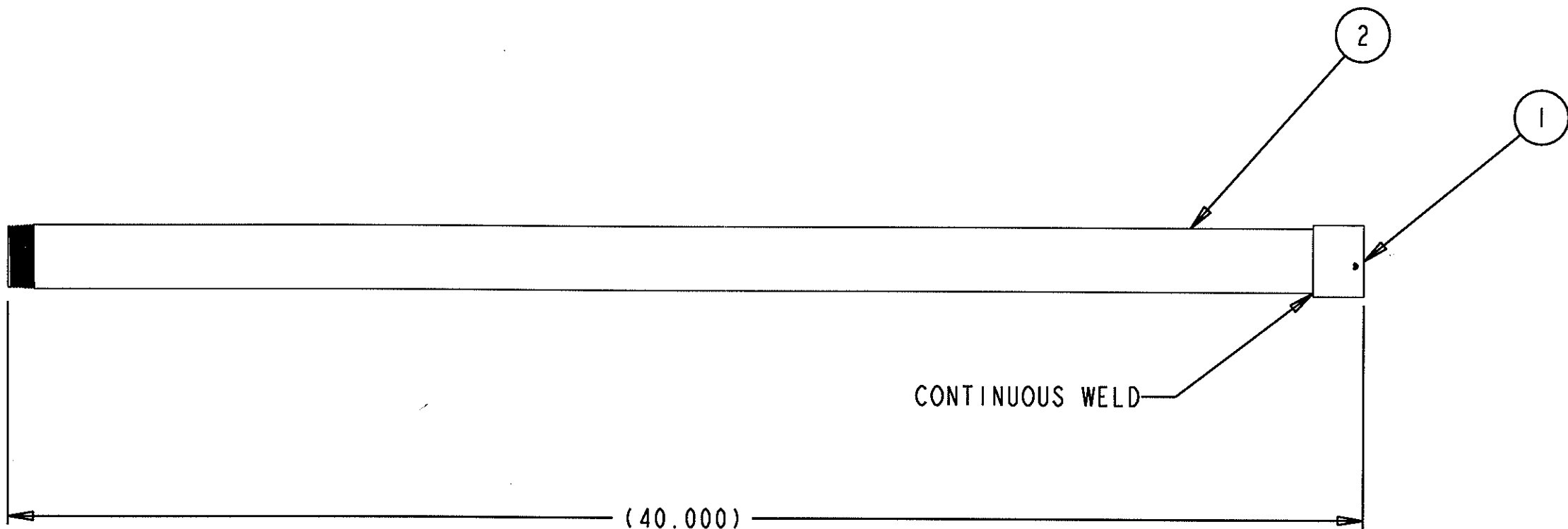


NAME: WFOREMAN OBJECT: 146-7051004 DATE: 17-Dec-03 10:19:45

FRM-5 REV D
(97-12-01) TJT

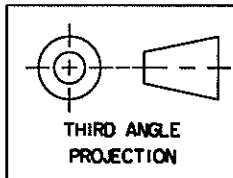
NOTES, UNLESS OTHERWISE SPECIFIED:

REVISIONS					
REV	ECO NO.	ZONE	DESCRIPTION	DATE	BY
A	03-9539	N/A	RELEASE TO PRODUCTION	10-Dec-03	WLF



(COMPUTER DATA BASE DRAWING, PRO-E)

		UNLESS OTHERWISE SPECIFIED:	UNLESS OTHERWISE SPECIFIED DIMENSIONS ARE IN INCHES:	APPROVALS		DATE	PELCO		Worldwide Leaders in Closed Circuit Video Systems	
		THIS DOCUMENT AND THE DATA DISCLOSED HEREIN AND HERewith IS THE PROPERTY OF PELCO AND IS NOT TO BE REPRODUCED, USED OR DISCLOSED IN WHOLE OR IN PART WITHOUT THE PERMISSION OF PELCO. ALL PATENT, PROPRIETARY, DESIGN, USE, SALE, MANUFACTURING AND RIGHTS THERETO ARE RESERVED BY PELCO	TOLERANCES:	DWN W.FOREMAN		10-Dec-03	3500 PELCO WAY, CLOVIS, CALIFORNIA 93612-5699 USA			
			.XX ± .030	CHK		3/12/04	ASSY, 1 M EXTENSION			
			.XXX ± .005	MECH		3/12/04				
			ANGLES ± .5°	ELEC						
			MATERIAL:	MFG						
			SEE BOM	PROJ W.FOREMAN		10-Dec-03	SIZE B	DWG NO. 146-7051004	REV A	
			FINISH:	EOD			SCALE: 0.250 = 1		WT	
			LIGHT GRAY				SHEET 1 OF 1			
		DO NOT SCALE DRAWING								
		APPLICATION								
		NEXT ASSY	USED ON							



THIRD ANGLE
PROJECTION