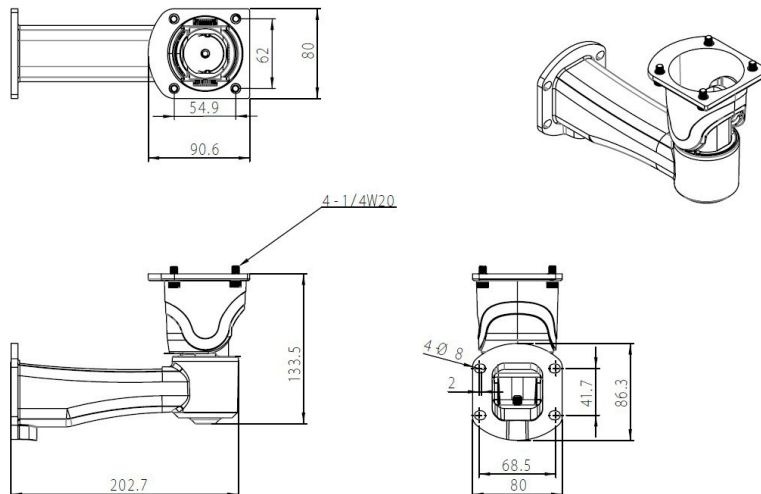


EM20 Heavy Duty Replacement Mount And Optional Mounts

Product Features

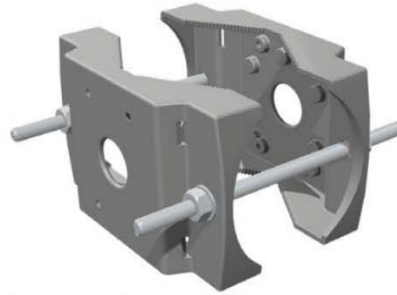
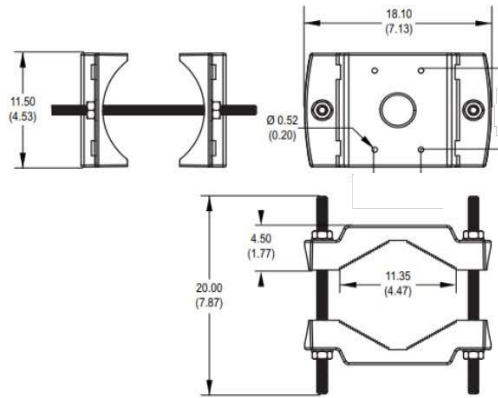
- Larger mount arm for more stability.
- Die Cast construction
- Cable pass through
- Compatible with all models of EH20 enclosures
- Optional pole and junction box mounts

● SM-EM20HD-3967 – Heavy Duty Mount for EH20



- **SM-EP21-3967** - direct replacement of **EP21** that is compatible with **SM-EM20HD-3967**

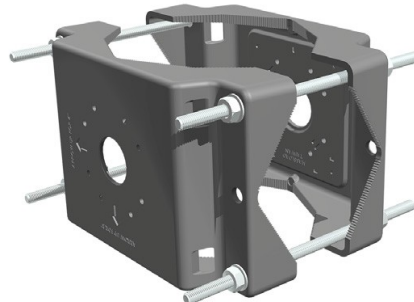
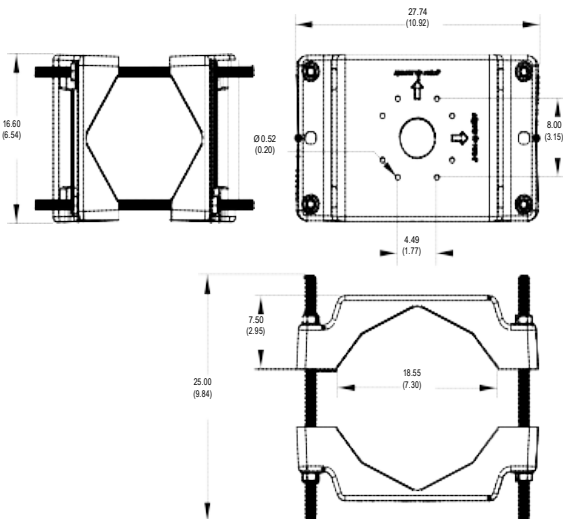
OPTIONAL SMALL POLE MOUNT



Note: Suitable for poles with diameters of 56.7 mm to 136 mm (2.23 in to 5.35 in).

- **SM-EP20-3967** - direct replacement of **EP20** that is compatible with **SM-EM20HD-3967**

LARGE POLE MOUNT



Note: Suitable for poles with diameters of 70 mm to 120 mm (2.75 in to 4.72 in) and 120 mm to 230 mm (4.72 in to 9.05 in).

- **SM-EM20JB-3967** – direct replacement of **EM20JB** that is compatible with **SM-EM20HD-3967**

WALL MOUNT JUNCTION BOX

