

# EM1109/SM-EM2000-4551 Mount

## PIPE/POLE MOUNT, MEDIUM DUTY, ENCLOSURE

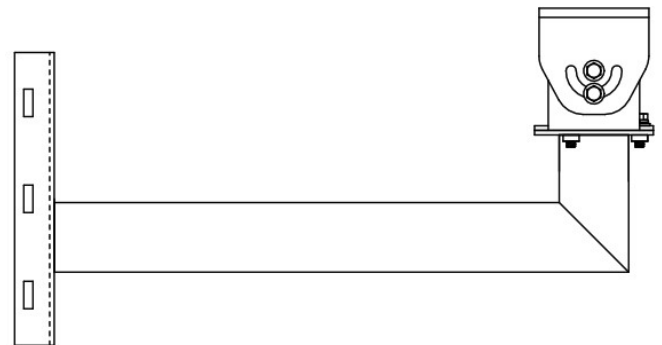
### Product Features

- Manually Adjustable Swivel Head
- Cable Feedthrough Hole
- Supports up to 40 lb. (18.14 kg)
- Mounts on Vertical or Horizontal Pipe/Pole; Mounting Straps Included
- Compatible with Most Pelco Enclosures with a 2-Inch (5.08 cm) Mounting Pole Pattern

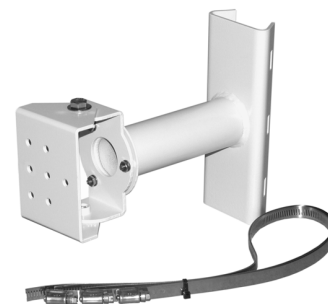
The **EM1109/SM-EM2000-4551** are medium-duty enclosure mounts designed for applications where mounting on a pipe or pole is necessary. These mounts can be used with Pelco enclosures with a 2-inch (5.08 cm) mounting hole pattern and can support up to 40 lb. (18.14 kg). Both mounts feature a manually adjustable swivel head and a cable feedthrough hole to conceal wiring. Multiple mounting holes on the tilt table provide maximum 360-degree horizontal positioning of the enclosure.

The **EM1109** is a pedestal mount for use on a horizontal or vertical pipe or pole. The **SM-EM2000-4551** is a J-type mount for use on a vertical pipe or pole. The **EM1109/SM-EM2000-4551** must be mounted on pipes or poles having a 3-inch (7.62 cm) to 8-inch (20.32 cm) diameter. Mounts are secured to the pipe or pole with stainless steel mounting straps. Two 1/4-20 mounting bolts required to secure the enclosure to the mount are supplied.

The **EM1109/SM-EM2000-4551** are constructed of aluminum and have a white epoxy powder coat finish.



SM-EM2000-4551



EM1109

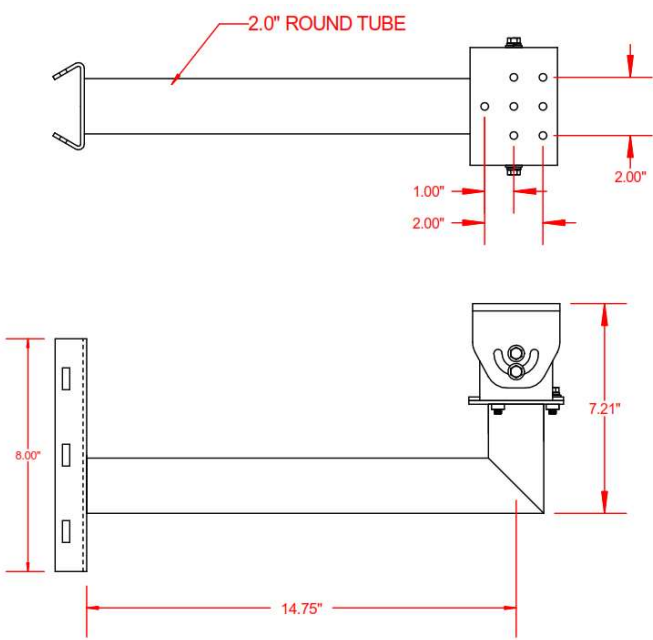


# PRODUCT SPECIFICATION

## SMR VERSION

### MODELS

SM-EM2000-4551	Medium duty 90-degree J-mount for vertical pipe or pole applications. Manually adjustable swivel head and cable feedthrough hole.
EM2200	Medium duty "hook" mount for horizontal pipe or pole applications. Manually adjustable swivel head and cable feedthrough hole.



SM-EM2000-4551

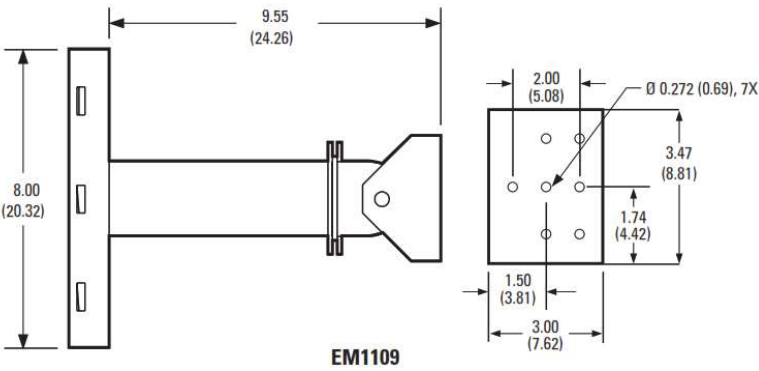
### MECHANICAL

Pan Adjustment	Unlimited 360°
Tilt Adjustment	±75°
Locking Method	3/8-16 hex head bolts (on manually adjustable swivel head)

### GENERAL

Suggested Mounting Method	Slots provided for mounting straps; 3 stainless steel straps supplied. Straps fit 3-inch (7.62 cm) to 8-inch (20.32 cm) diameter pole.
Enclosure Mounting	2, 1/4-20 mounting bolts (supplied)
Maximum Load	40 lb. (18.14 kg)
Construction	Aluminum

Finish	
SM-EM2000-4551	Pelco Light Gray powder coat
EM1109	White powder coat



EM1109