



VideoXpert™ v 3.x Integration  
Fiber SenSys  
Installation and Operations Manual



VideoXpert™

## Contents

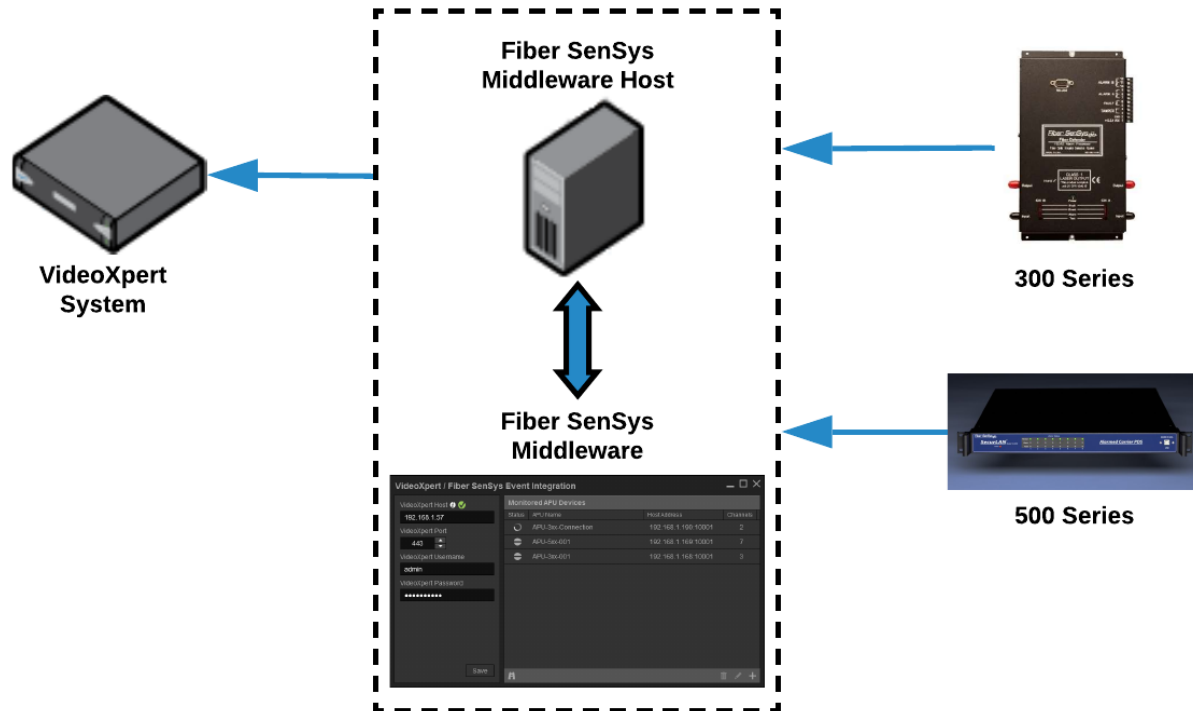
<b>Introduction</b>	<b>3</b>
<b>System Overview</b>	<b>3</b>
<b>Installing Fiber SenSys</b>	<b>4</b>
<b>Operating VideoXpert / Fiber SenSys</b>	<b>5</b>
Locating VideoXpert System Settings	5
Configuring the VideoXpert System	6
Monitored APU Devices Overview	7
Adding Fiber SenSys APUs	8
Option 1: Adding Fiber SenSys APUs Manually by IP Address	8
Option 2: Adding Fiber SenSys APUs Using Auto-Discovery	9
Configuring APUs and Channels	10
Deleting APUs	11
Exiting the Application	11
<b>Troubleshooting</b>	<b>12</b>
Locating Logs	12
Pelco Troubleshooting Contact Information	12
<b>Version Information</b>	<b>12</b>

## Introduction

This document is the installation and operation guide for VideoXpert™ Integration with Fiber SenSys Alarm Processor Units (APUs).

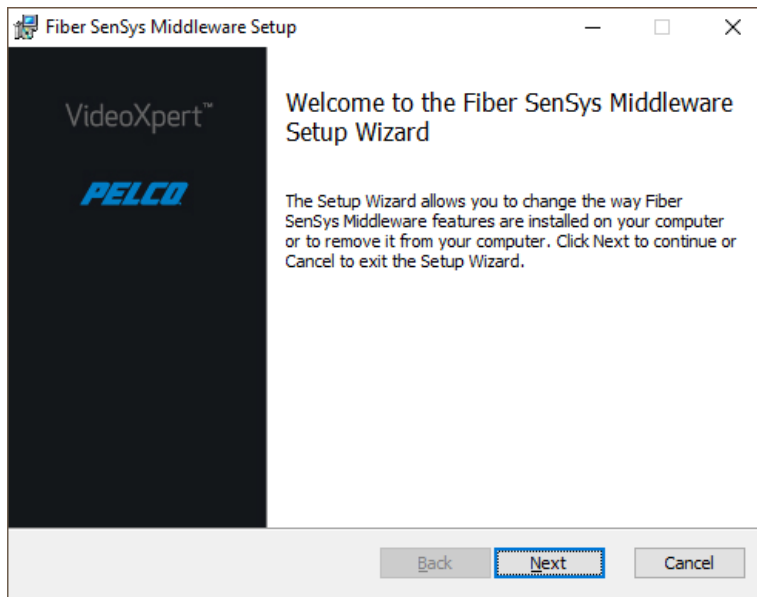
## System Overview

The FiberSenSysMiddleware software package provides the ability to subscribe to and receive events from Fiber SenSys APUs, and inject them into a VideoXpert system.

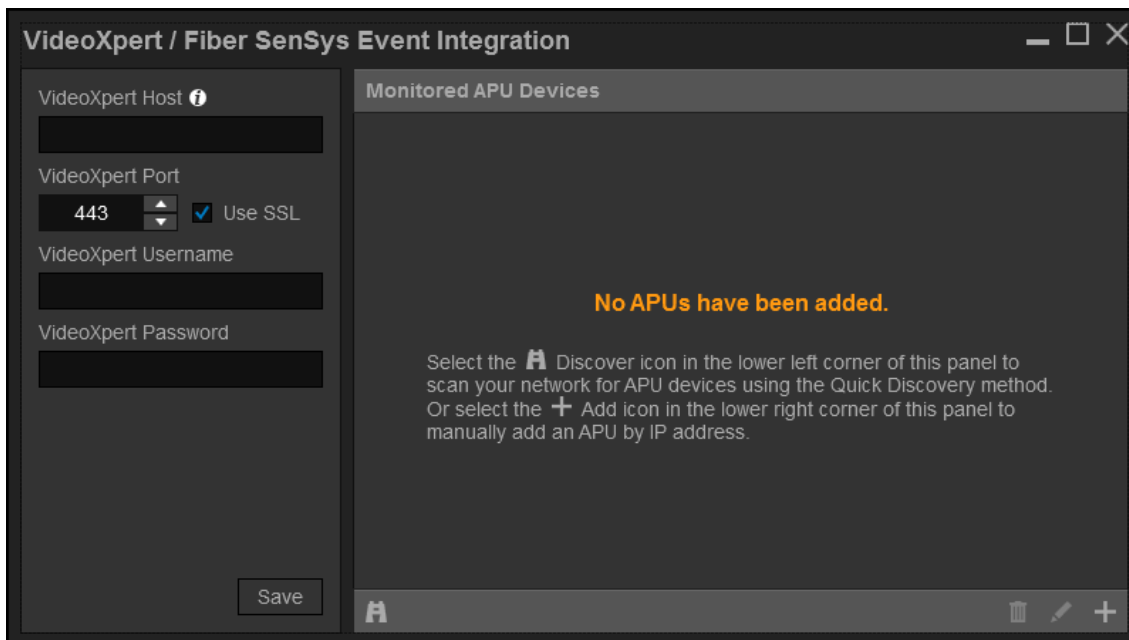


## Installing Fiber SenSys

1. Install the prerequisite *Microsoft Visual C++ Redistributable for Visual Studio 2015 x64*.
2. Download and run the Fiber SenSys installer.
3. Click **Next** as necessary to complete the installation.



4. Run the Fiber SenSys Middleware application.



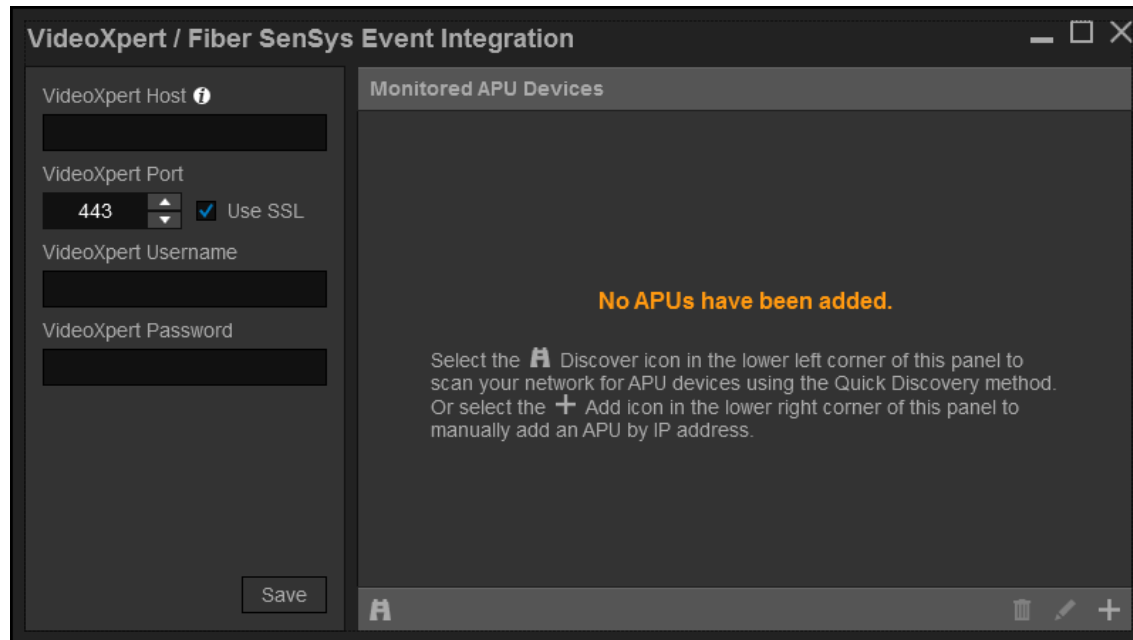
# Operating VideoXpert / Fiber SenSys

## Locating VideoXpert System Settings



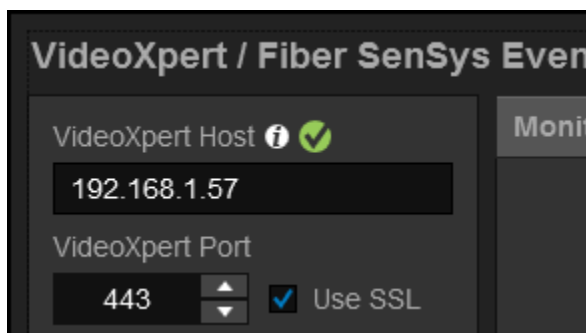
1	The icons in the <b>Status</b> column show the current connection status of the VideoXpert system. The status is indicated with the following icons: <ul style="list-style-type: none"><li>Connected to the VideoXpert system.</li><li>There was an issue connecting to the VideoXpert system.</li></ul>
2	<b>VideoXpert Host:</b> The IP address of the VideoXpert system.
3	<b>VideoXpert Port:</b> The communication port of the VideoXpert system ( <i>default is 443</i> ).
4	<b>VideoXpert Username:</b> The username used to log in to the VideoXpert system.
5	<b>VideoXpert Password:</b> The password used to log in to the VideoXpert system.
6	<b>Save:</b> Click to save the current settings and test the connection.
7	<b>Use SSL:</b> Enables SSL for the connection to the VideoXpert system.

## Configuring the VideoXpert System

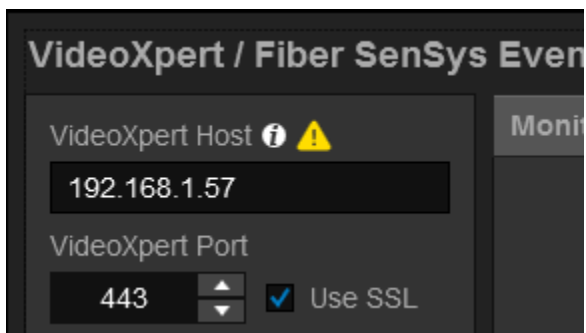


1. Enter the IP address and credentials for the VideoXpert system on the left side of the middleware application, and then click Save.

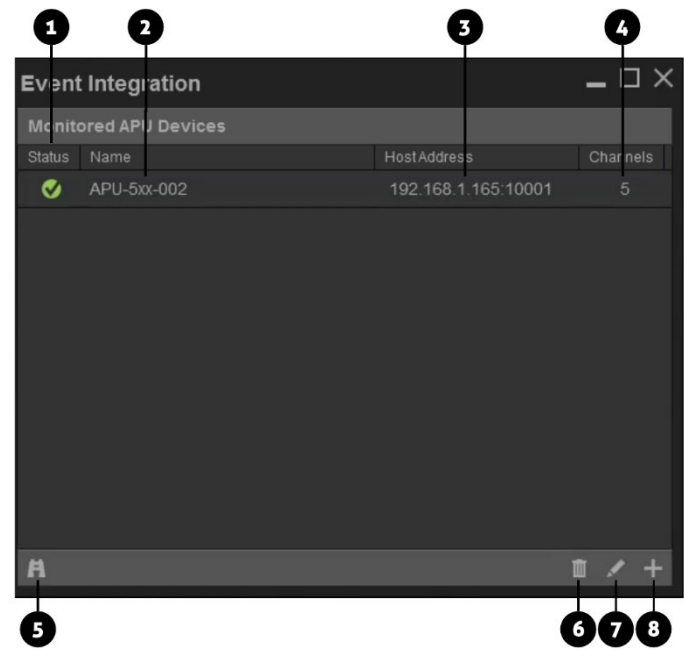
When all information is entered correctly, a green checkmark is shown next to the related section.



If the VideoXpert server is disconnected or if invalid settings have been entered, the middleware application shows an exclamation mark warning icon.



Monitored APU Devices Overview

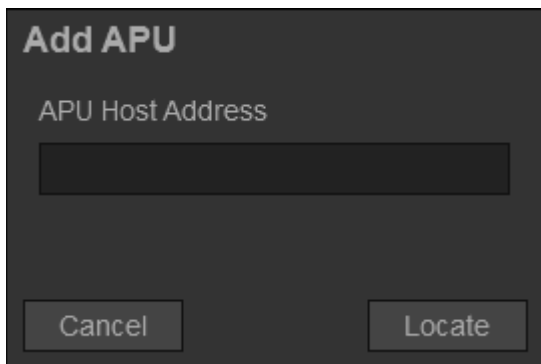


1	<p>The icons in the <i>Status</i> column show the current status of the APU. The status is indicated with the following icons:</p> <ul style="list-style-type: none"><li>○ Connecting to the APU device. Note: It may take up to two minutes to connect to an APU.</li><li>⊘ Unable to connect to the APU device.</li><li>✓ Connected to the APU device.</li><li>⌕ The APU is in the connection queue.</li></ul>
2	<p>The <i>Name</i> column displays the name of the APU device.</p>
3	<p>The <i>Host Address</i> column displays the IP address and port of the APU device.</p>
4	<p>The <i>Channels</i> column displays the total number of channels hosted by the APU device.</p>
5	<p>Click the <b>A</b> icon to display the <i>Discover APUs</i> dialog.</p>
6	<p>Click the  icon to display the <i>Delete APU(s)</i> prompt.</p>
7	<p>Click the  icon to display the <i>Edit APU</i> dialog.</p>
8	<p>Click the <b>+</b> icon to display the <i>Add APU</i> prompt.</p>

## Adding Fiber SenSys APUs

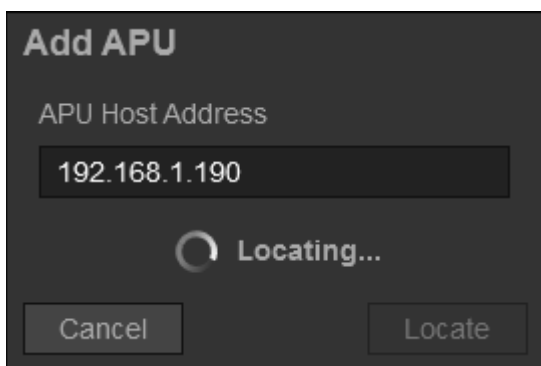
### Option 1: Adding Fiber SenSys APUs Manually by IP Address

1. Click the **+** icon on the lower right corner of the *Monitored APU Devices* panel to open the *Add APU* dialog box.



The 'Add APU' dialog box is shown. It has a title bar 'Add APU'. Below the title is a label 'APU Host Address' followed by a text input field. At the bottom, there are two buttons: 'Cancel' on the left and 'Locate' on the right.

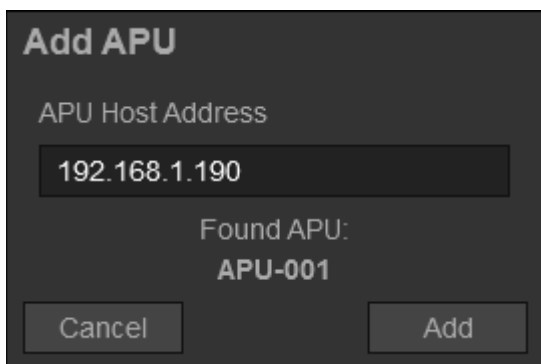
2. Enter the IP address of the APU, and then click **Locate**.



The 'Add APU' dialog box is shown. The 'APU Host Address' field now contains the IP address '192.168.1.190'. Below the input field, there is a circular loading icon followed by the text 'Locating...'. The 'Cancel' and 'Locate' buttons are still present at the bottom.

If the APU is successfully located, the name of the APU is displayed.


3. Click **Add**.

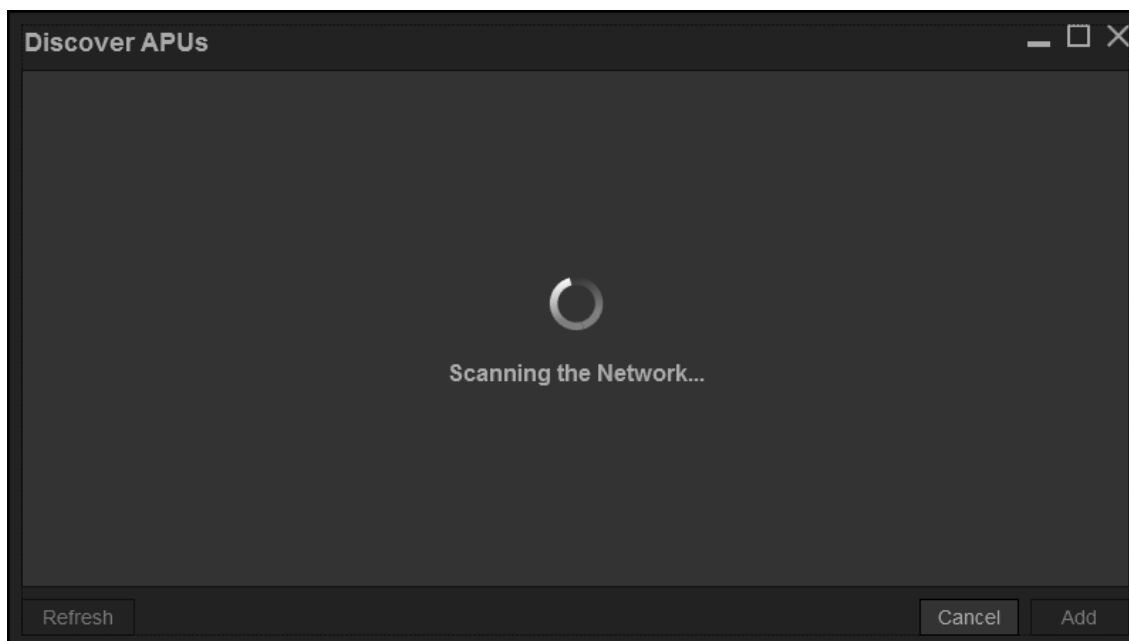


The 'Add APU' dialog box is shown. The 'APU Host Address' field contains '192.168.1.190'. Below the input field, the text 'Found APU:' is displayed, followed by 'APU-001' in a larger, bold font. The 'Cancel' button is on the left and the 'Add' button is on the right at the bottom.

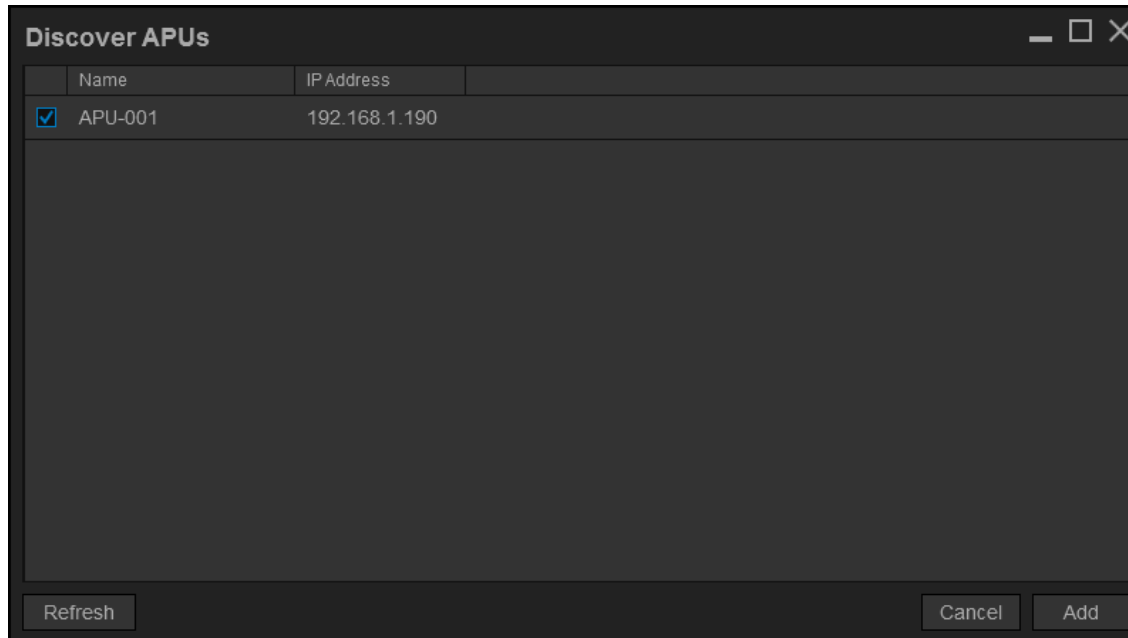


## Option 2: Adding Fiber SenSys APUs Using Auto-Discovery

1. Click the  icon on the lower left corner of the *Monitored APU Devices* panel to open the *Discover APU*s dialog box. Auto-Discovery begins after the dialog is loaded.




Any APUs that were discovered are listed after the network scan is complete.

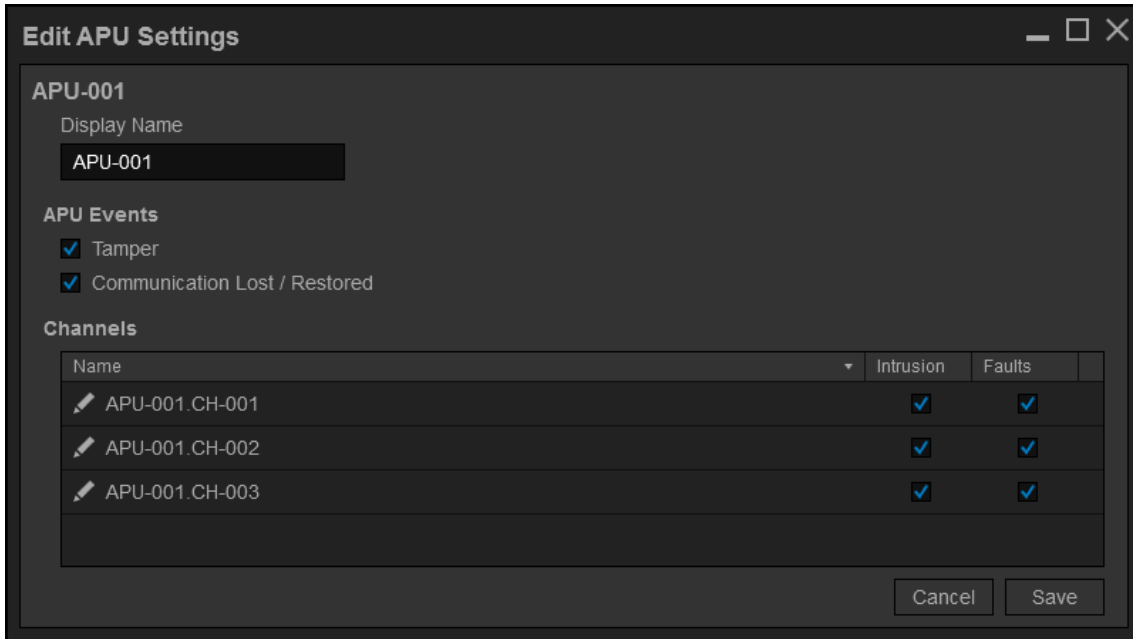


2. Click to select the checkbox for each APU device to monitor in the list, and then click **Add**.
3. (Optional) If the device you are searching for was not discovered, click **Refresh** to run the network scan again.

## Configuring APUs and Channels

The names that are displayed for an APU or channel can be configured for each APU. The integration will use the value set in the *Display Name* field for events that are sent to the VideoXpert system. You may also choose which event types to be reported to the VideoXpert system.

1. Select the APU device you would like to configure, and then click the  icon at the lower right corner of the *Monitored APU Devices* panel. This opens the *Edit APU Settings* dialog.



**Edit APU Settings**

**APU-001**




Display Name  
APU-001

**APU Events**


☒ Tamper

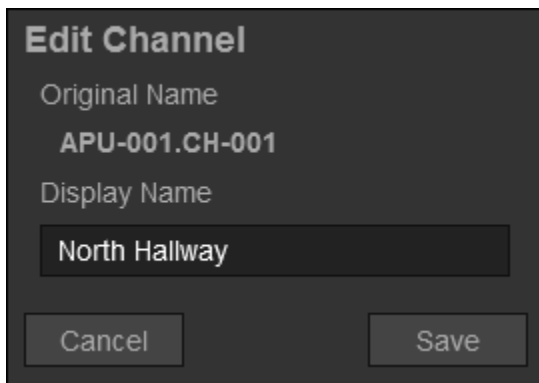
☒ Communication Lost / Restored

**Channels**

Name	Intrusion	Faults
 APU-001.CH-001	<input checked="" type="checkbox"/>	<input checked="" type="checkbox"/>
 APU-001.CH-002	<input checked="" type="checkbox"/>	<input checked="" type="checkbox"/>
 APU-001.CH-003	<input checked="" type="checkbox"/>	<input checked="" type="checkbox"/>

Cancel Save

2. To change the name of an APU, edit the value in the *Display Name* textbox.
3. For channels, click the  icon next to the channels name to open the *Edit Channel* dialog. Edit the value in the *Display Name* field, and then click **Save**.



**Edit Channel**

Original Name  
APU-001.CH-001

Display Name  
North Hallway


Cancel Save

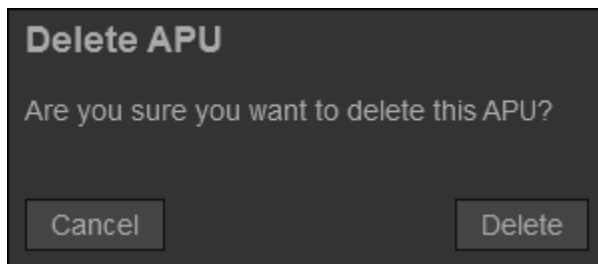
- Click to select the checkboxes for each type of event to receive for the APU device.

Alarm Type	Description	Source	VideoXpert Situation Type
Tamper	The APU reported a tamper condition.	APU	external/fiber_sensys/tamper_on external/fiber_sensys/tamper_off
Communication Lost / Restored	The software has lost/restored communication with the APU.	APU	external/fiber_sensys/connection_lost external/fiber_sensys/connection_restored
Intrusion	An intrusion has been detected on the channel.	Channel	external/fiber_sensys/intrusion
Faults	Loss or significant degradation of returning optical power was detected for the channel.	Channel	external/fiber_sensys/fault_on external/fiber_sensys/fault_off

- Click **Save**.

## Deleting APUs

- Click to select the APU device(s) you would like to remove, and then click the  icon in the lower right corner of the *Monitored APU Devices* panel.
- In the confirmation dialog box, click **Delete**.



## Exiting the Application

- Closing this application will minimize it to the system tray and run it in the background.
- To open and/or reconfigure the middleware, double-click the icon in the system tray.
- To exit and close the middleware, right-click the icon in the system tray, and then click **Exit**.

## Troubleshooting

### Locating Logs

Logs are located at C:\ProgramData\Pelco\FiberSenSysMiddleware\Logs.

### Pelco Troubleshooting Contact Information

For further assistance, contact Pelco Product Support at 1-800-289-9100 (USA and Canada) or +1-559-292-1981 (international).

## Version Information

Integration Component Version

Component Name	Version	Description
FiberSenSysMiddleware	1.0.0.5 (Software) / 3.8 (VX)	Middleware is used to listen for events from Fiber SenSys APUs and inject them into VideoXpert as events.



**Pelco, Inc.**

625 W. Alluvial Ave.

Fresno, CA 93711

Tel. +1 559-292-1981

[www.pelco.com](http://www.pelco.com)

Pelco, the Pelco logo, and other trademarks associated with Pelco products referred to in this publication are trademarks of Pelco, Inc. or its affiliates. ONVIF and the ONVIF logo are trademarks of ONVIF Inc. All other product names and services are the property of their respective companies. Product specifications and availability are subject to change without notice. ©Copyright 2019, Pelco, Inc. All rights reserved.