

# EM2400 Mount

## WALL MOUNT, LIGHT-DUTY, ENCLOSURE

### Product Features

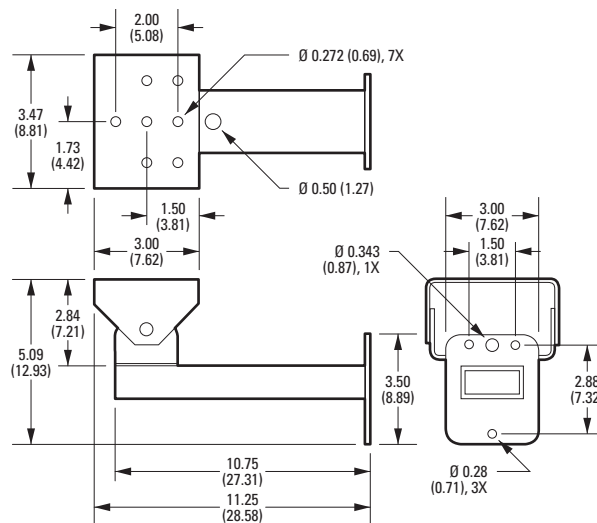
- Light Duty Wall Mount
- Adjustable Head
- Supports up to 9.07 kg (20 lb)
- Accommodates EH4000 Series Enclosures and Light- to Medium-Weight Cameras
- Cable Feedthrough Hole Conceals Wiring
- Can be Adapted for Pole Mount Applications with Use of PA101 Adapter



The **EM2400** is a light duty wall mount capable of supporting a maximum load of 9.07 kg (20 pounds). This mount is primarily for use with our EH4010 and EH4014 enclosures, but it can be used with other lightweight enclosures or light-to-medium-weight large format cameras.

The **EM2400** is constructed of aluminum and also features an adjustable head, which allows mechanical positioning of the camera or enclosure. In addition to the removable front end cap, there is also a half-inch diameter cable feedthrough hole in the mounting arm that conceals the camera or enclosure wiring.

In addition, the **EM2400** can be adapted for pole mount applications when used with the PA101 pole mount adapter.



NOTE: VALUES IN PARENTHESES ARE CENTIMETERS;  
ALL OTHERS ARE INCHES.

# TECHNICAL SPECIFICATIONS

## MODEL

EM2400 Light duty wall mount with cable feedthrough for EH4010/EH4014 enclosures and light-to-medium-weight large format cameras; manually adjustable swivel head.

## MECHANICAL

Pan Adjustment 360°  
Tilt Adjustment ±90°

## GENERAL

Enclosure Mounting Two 1/4-20 x 0.625 hex head machine screws (supplied)

Suggested Mounting Method Secure to solid surface with three 1/4-inch diameter fasteners (not supplied) or use one 5/16-inch diameter and one 1/4-inch diameter fastener for center mount holes in applications where wall studs are encountered

Cable Feedthrough One 1.27 cm (0.50-inch) diameter hole in mount arm

Construction Aluminum

Finish Gray polyester powder coat

Maximum Load 9 kg (20 lb)

Unit Weight  
EM2400 1.25 kg (2.75 lb)  
PA101 0.40 kg (0.88 lb)

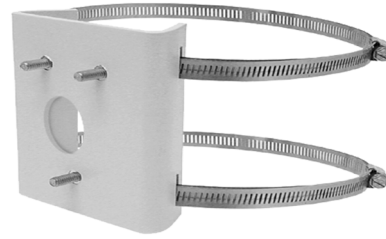
Shipping Weight  
EM2400 1.81 kg (4 lb)  
PA101 0.90 kg (2 lb)

## CERTIFICATIONS

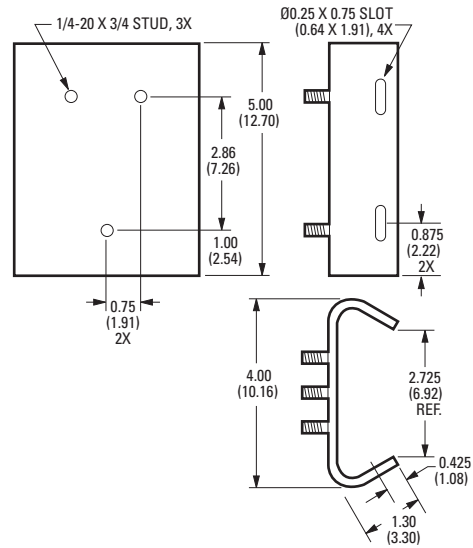
- UL Listed

## OPTIONAL MOUNT ADAPTER

PA101 Pole mount adapter for EM2400 mount. Stainless steel straps supplied. Straps fit 7.62 cm (3-inch) to 20.32 cm (8-inch) diameter pole.



**PA101 POLE ADAPTER**



NOTE: VALUES IN PARENTHESES ARE CENTIMETERS; ALL OTHERS ARE INCHES.